

“...making the River Holme
a better place for people,
business and wildlife.”



RIVER HOLME
CONNECTIONS



Adrian Barraclough

Co-Founder

www.riverholmeconnections.org

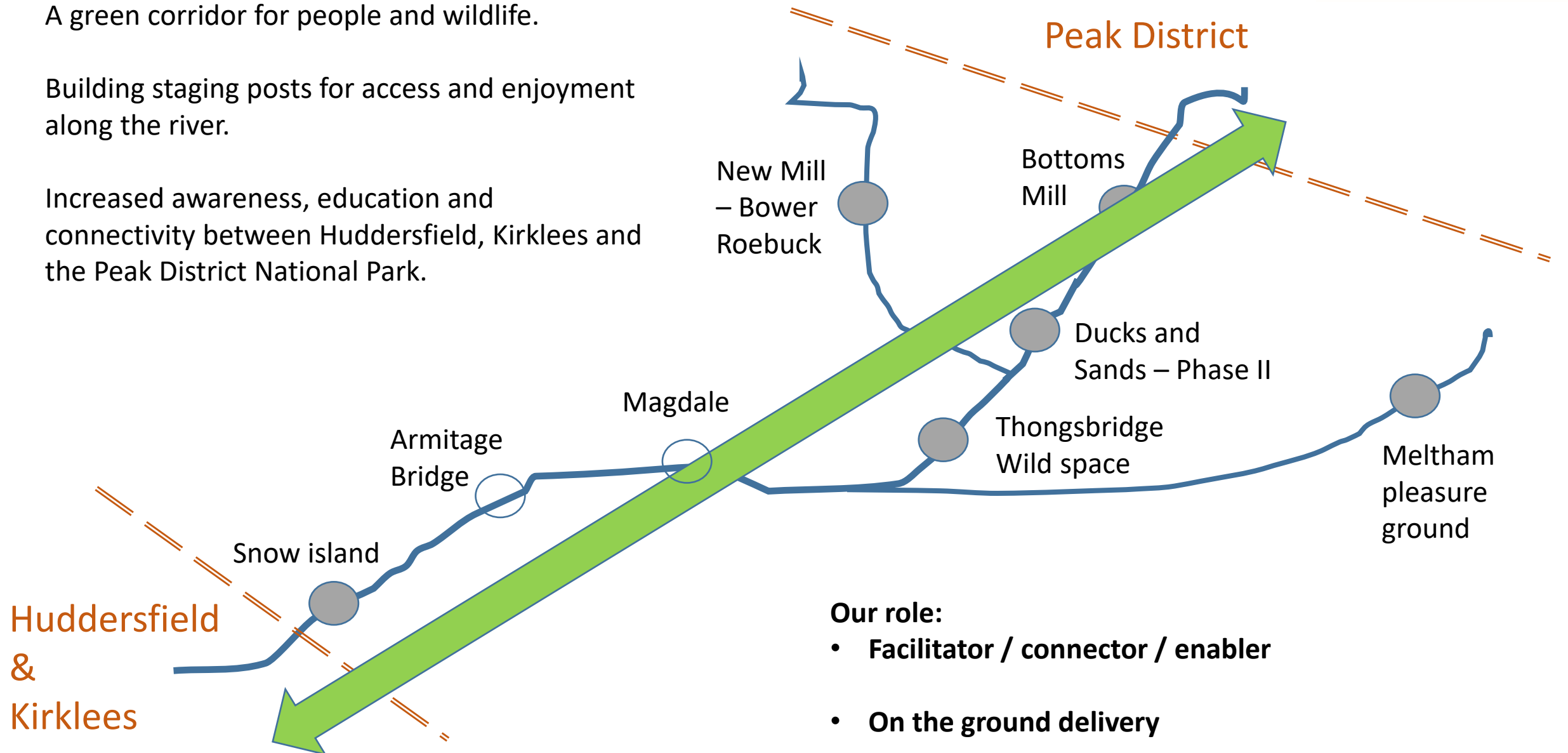
Our Vision



A green corridor for people and wildlife.

Building staging posts for access and enjoyment along the river.

Increased awareness, education and connectivity between Huddersfield, Kirklees and the Peak District National Park.



Our role:

- **Facilitator / connector / enabler**
- **On the ground delivery**

Projects delivered

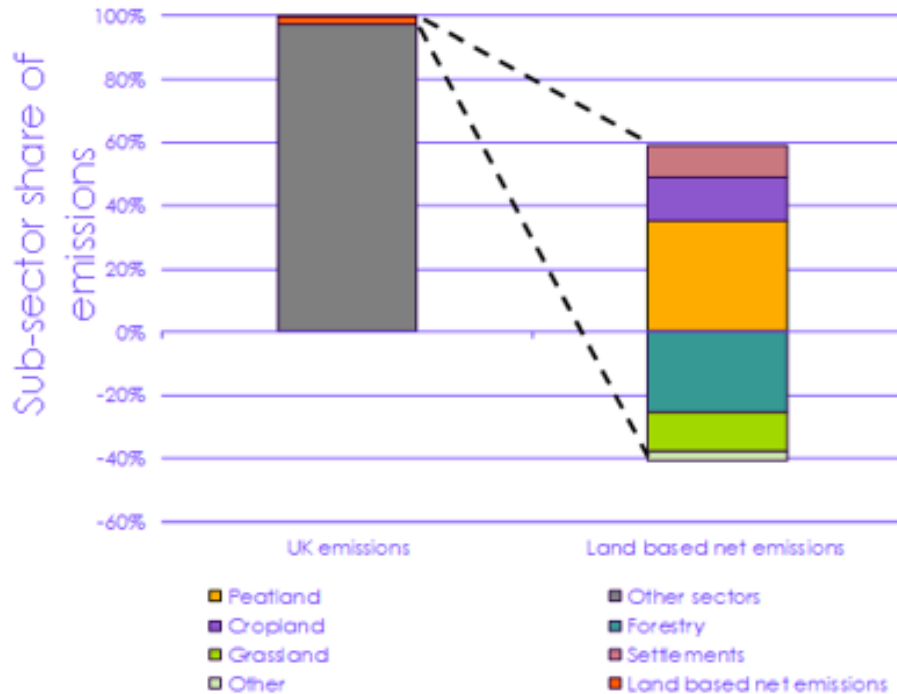


The UK Committee on Climate Change has set ambitious targets for UK nature restoration

By 2050, our land use sector must be transformed from a net emissions source into a significant carbon sink

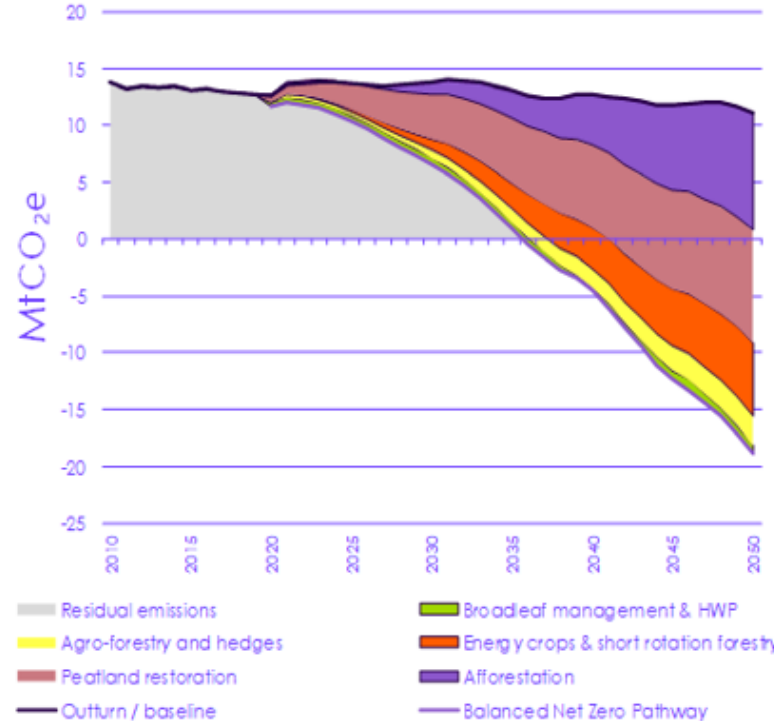
2018 emissions

The UK land use sector is currently a significant source of emissions. Degraded peatlands alone represent 4.5% of the entire UK footprint – emitting 24 million tCO₂e every year.



2050 emissions

Woodland creation and peatland restoration must transform the UK land sector into a carbon sink, drawing down 20 million tCO₂e every year.



The challenge: meeting the CCC targets

- We must mitigate 20 MtCO₂e per year from the UK land sector by 2030, rising to 39 MtCO₂e by 2050

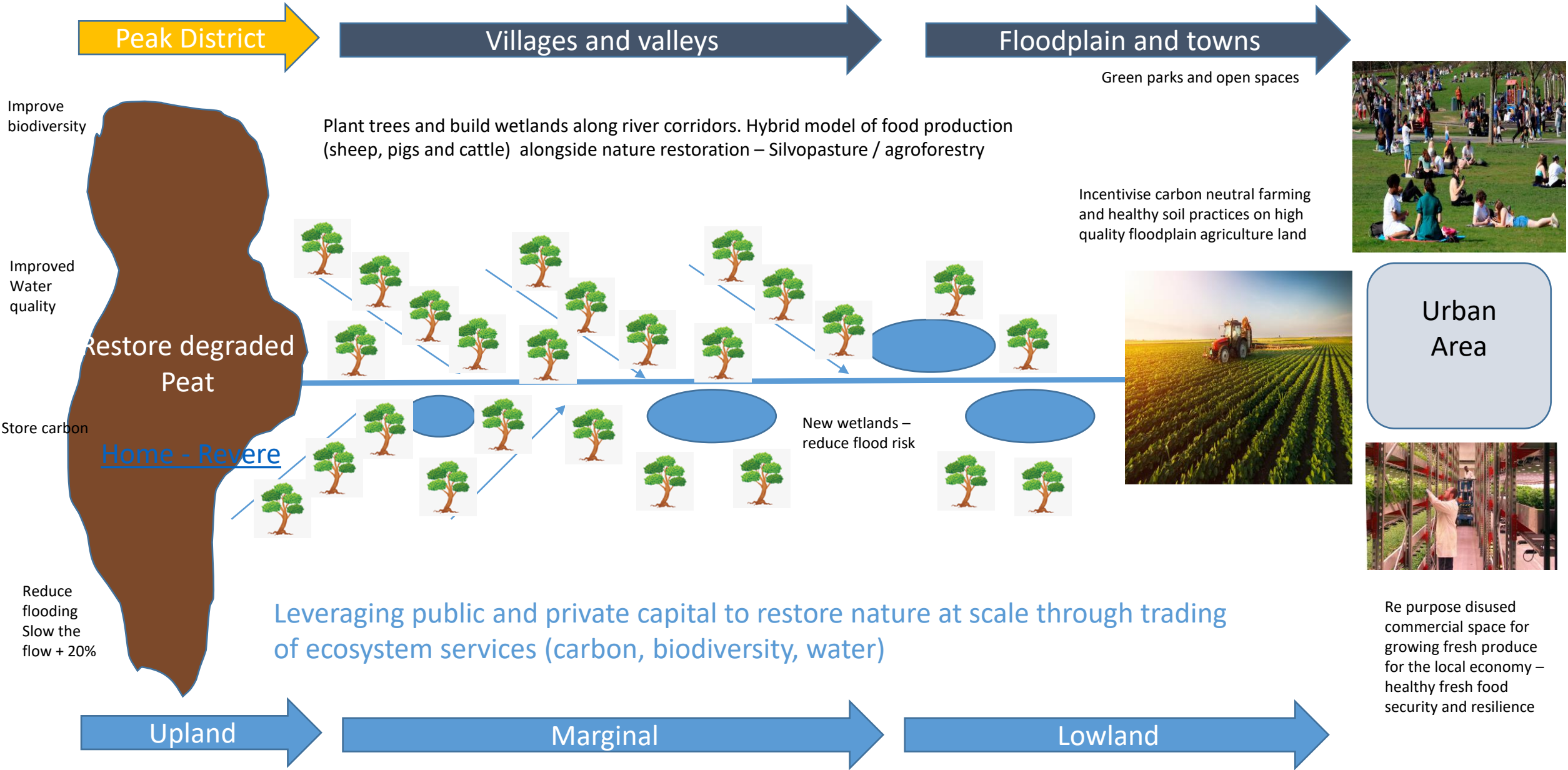
Creating new woodlands at scale

- Increasing UK woodland from 13% of land cover in 2019 to 18% by 2050
- This is equal to planting 30,000 ha of new woodland every year by 2035, rising to 50,000 per year by 2050
- Well over 1 million hectares of new woodland must be created by 2050
- Current woodland creation from all projects under development in Woodland Carbon Code: 26,000 ha only

Restoring peatland across the country

- Restoring 79% of our degraded peatland by 2050
- This is equal to 1 million hectares of peatland by 2050, or 35,000 hectares per year
- Peatland carbon code projects are currently in their infancy – though a pipeline of new projects under development is growing

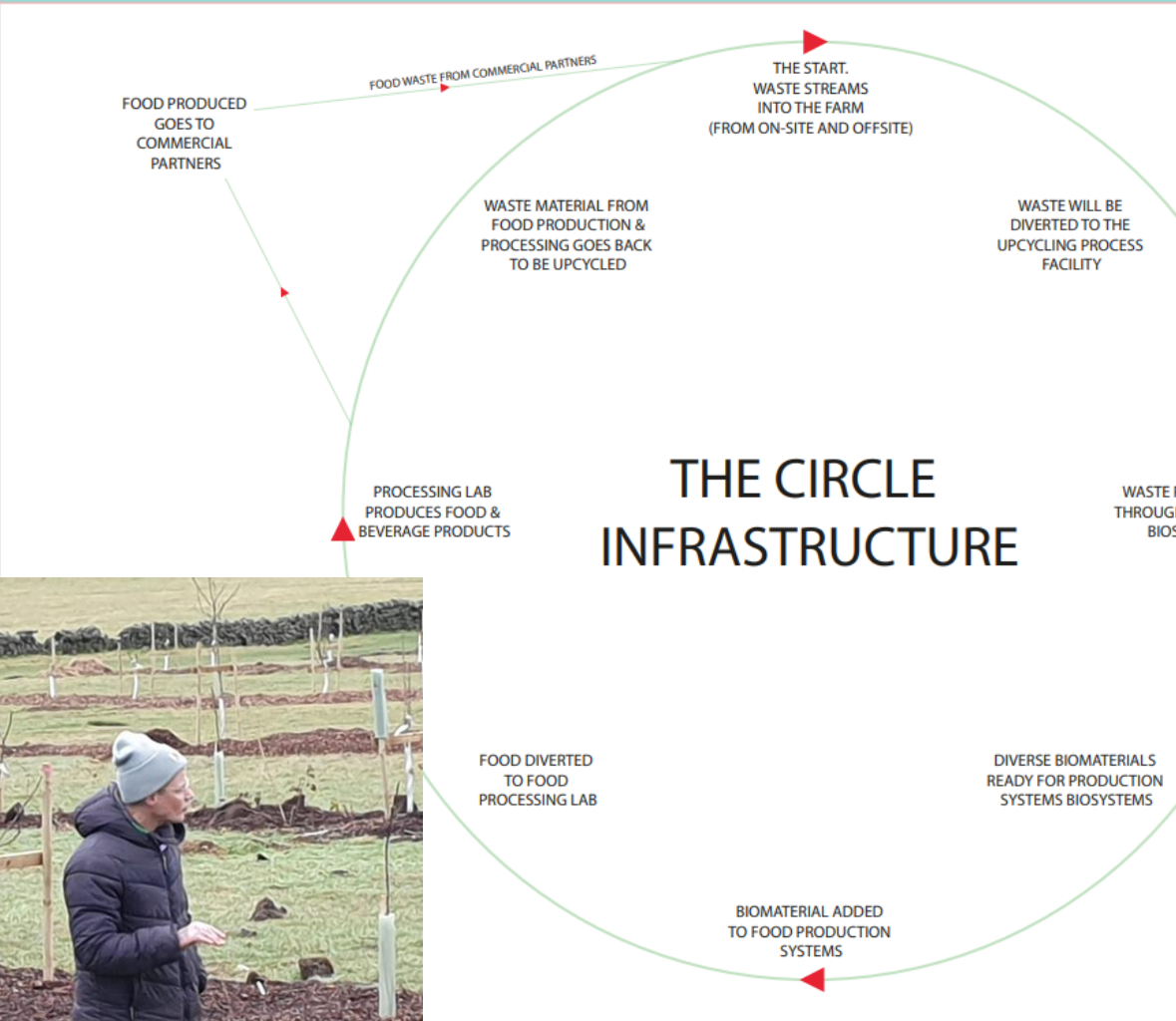
Kirklees opportunities - food and nature in harmony to help Kirklees meet net zero by 2038



Farm scale – Agroforestry food systems

FARM CIRCULAR

WHOLE CIRCULAR INFRASTRUCTURE DESIGN AND PROCESS



[REGENFARMCO](#)



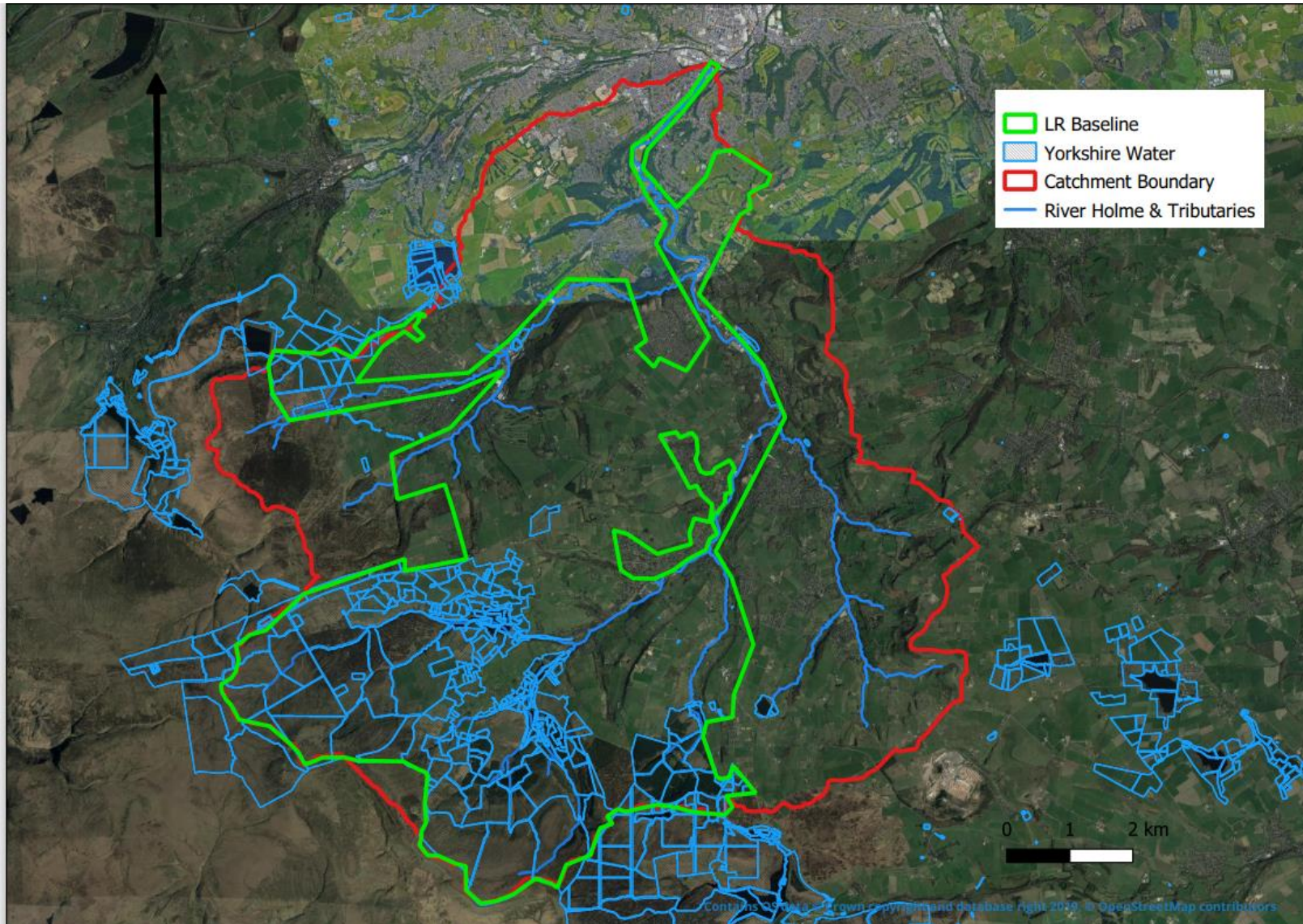
Landscape Scale – Natures Holme



RIVER HOLME
CONNECTIONS



Social



Environmental



Summary

- Net zero conversations and actions must recognise the need to provide quality food as well as environmental gain. We should not think planting trees everywhere is the answer. However farming practices in the Holme valley do need to change more rapidly. Maintaining the status quo will not help farm businesses survive and thrive or the climate emergency.
- Local NGO's / voluntary sector can provide real value to encourage change (landowner relationships; trust; independent; ethics and values; access to range of finance)
- The landscape recovery project will see the restoration of 2800ha of riverine habitat. There should be a similar sized scale project to encourage farmers on marginal land to explore and accelerate new commercial food crops (e.g. agroforestry) and enterprises (e.g. biochar)
- Policy needs to change (ELMs) to encourage more private finance into the land sector. Taxpayers money should not be used for woodland planting and peatland restoration, rather for footpath and field boundary maintenance, invasive species management; soil erosion controls and weir removal for example.
- There remains much the academic and research institutions can do to improve the evidence base demonstrating the benefits of nature based solutions for a resilient and sustainable local food economy.